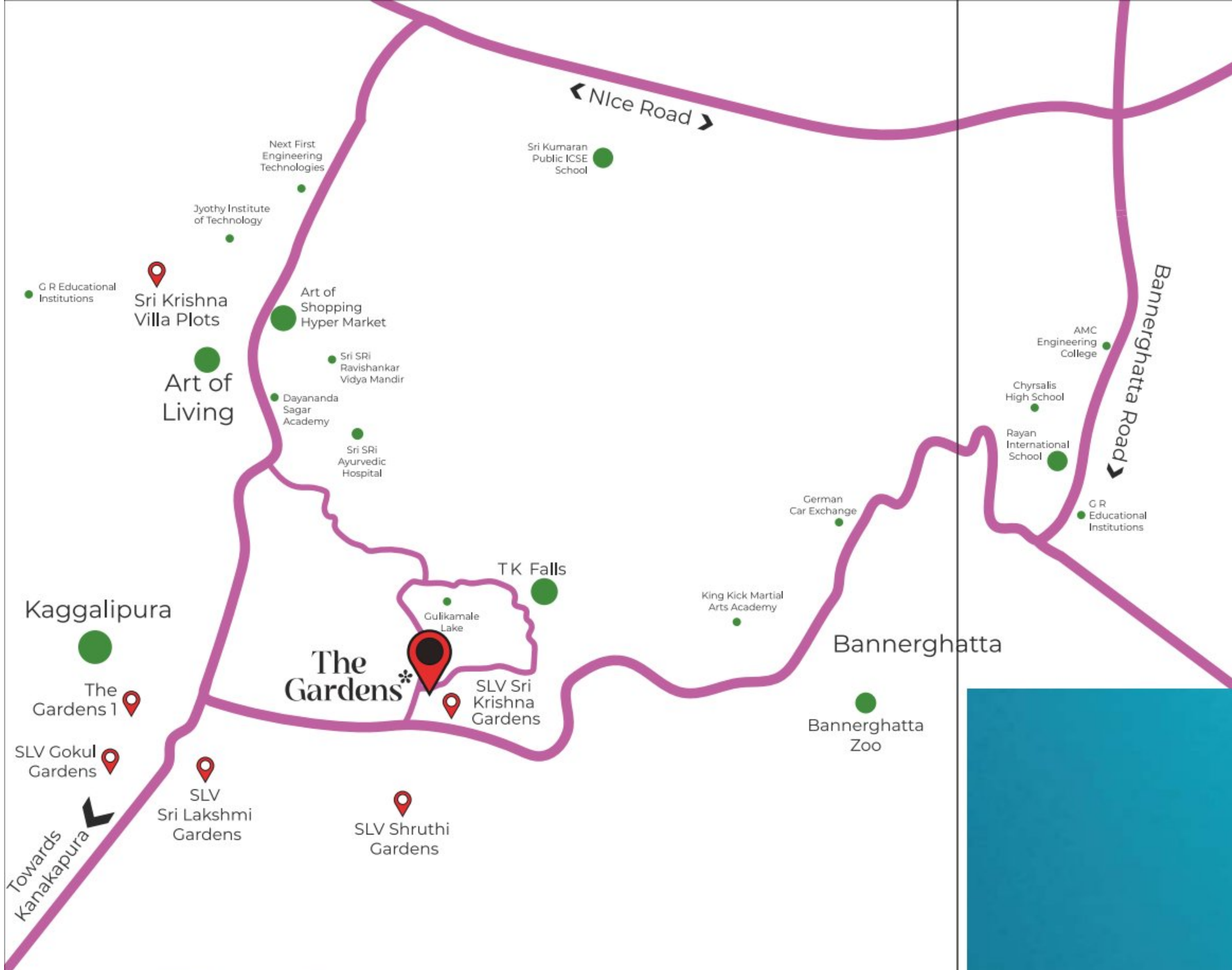


# The Gardens<sup>✿</sup>

Close to Conveniences. Closer to Heart.  
Gulakamale, Off Kanakapura Road.

**Project by SLV's H. Nagaraja**





## Amenities

- Grand entrance arch
- Boom barrier
- Cube court
- Basketball post
- Trellis
- Outdoor workout station
- Reflexology path (Walking path)
- Party lawn
- Amphitheatre
- BBQ zone
- Pavilion lounge
- Sand pit

## Facilities

- 24/7 security
- Over head tank
- Underground drainage
- Sewage treatment plant
- Asphalted roads
- Temple
- Sinages
- Access card
- Underground sump
- Rain water harvesting
- Avenue plantation
- Water, power and sanitary connection to each plot
- Underground electric cabling with street lights
- Gated community

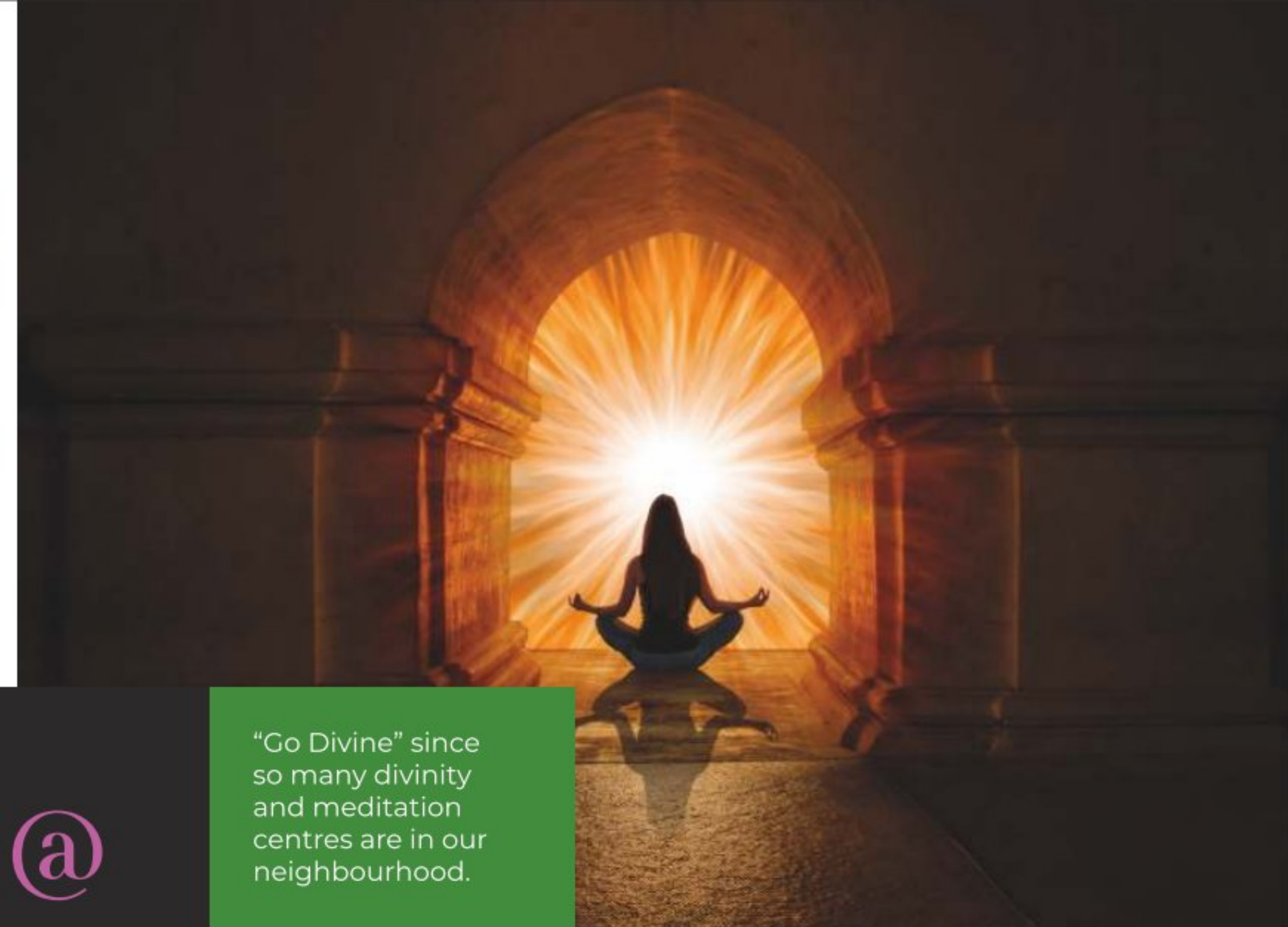
## The Project

Amidst tranquil surroundings, without compromising on any conveniences, The Gardens has been located very strategically in-between Kanakapura and Bannerghatta main roads. It offers benefits of both sides, as a result, everything needed for a quality living is at proximity.





Be it Shopping, Office, School or even Picnic reaching is so easy with highways and Nice road connected.

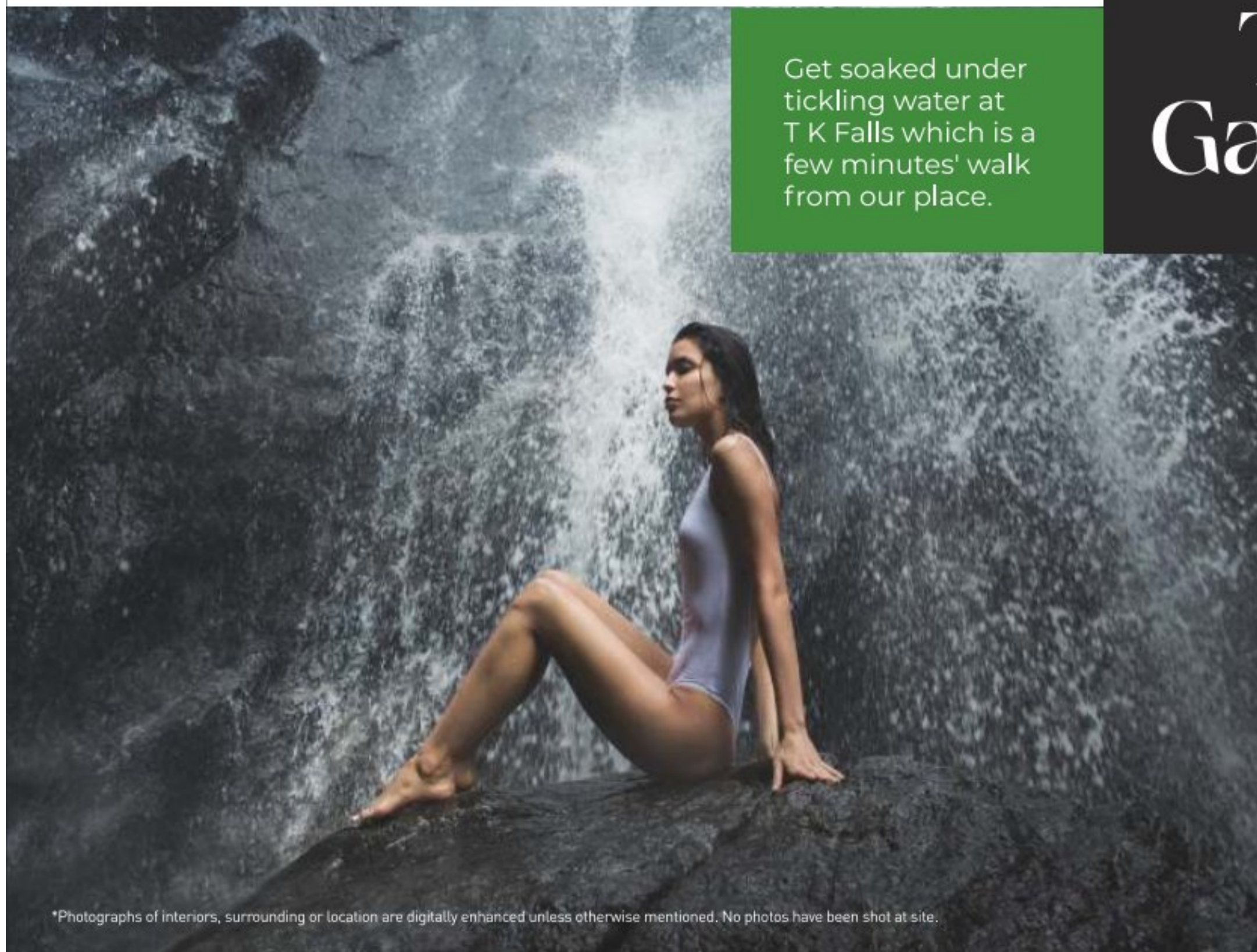


"Go Divine" since so many divinity and meditation centres are in our neighbourhood.

# Life @ The Gardens\*

Get soaked under tickling water at T K Falls which is a few minutes' walk from our place.

Spend some free time for yourself on what you always wanted to explore...



\*Photographs of interiors, surrounding or location are digitally enhanced unless otherwise mentioned. No photos have been shot at site.





## Brand Legacy

We have over 32 years of progressive presence in the real estate industry. Having completed more than 19 successful projects we at SLV Housing are the top developer in south Bangalore. Association with us will come with Assurances of Value Appreciation, The Best Location & Unmatchable Prices in the market.

## The Expert

Mr H. Nagaraja has been an icon in the real estate industry with 32 years of an enormous amount of experience. He has a touch of Midas. So far all his properties have fetched better than the best value. He does so much research before opting for a property. Throughout the project, he coordinates and manages with all his vendors to ensure the best output for his customers. His motto is to set a benchmark of providing the finest standard of livable spaces.

## Project Consultants



### Principal Architect

Shri Prashanth Rao **M/S Studio 312**

With decades of international design experience, Prashanth has been on par with today's futuristic trends. His immense knowledge of eco-friendly solutions has taken his projects to another level of offering to his clients.

### Landscape Architect

Kumuda MP **M/S IM Dzin Centre LLP**

A Versatile, high energy professional with the distinction of conceptualising and executing prestigious projects with high level of quality across the country.

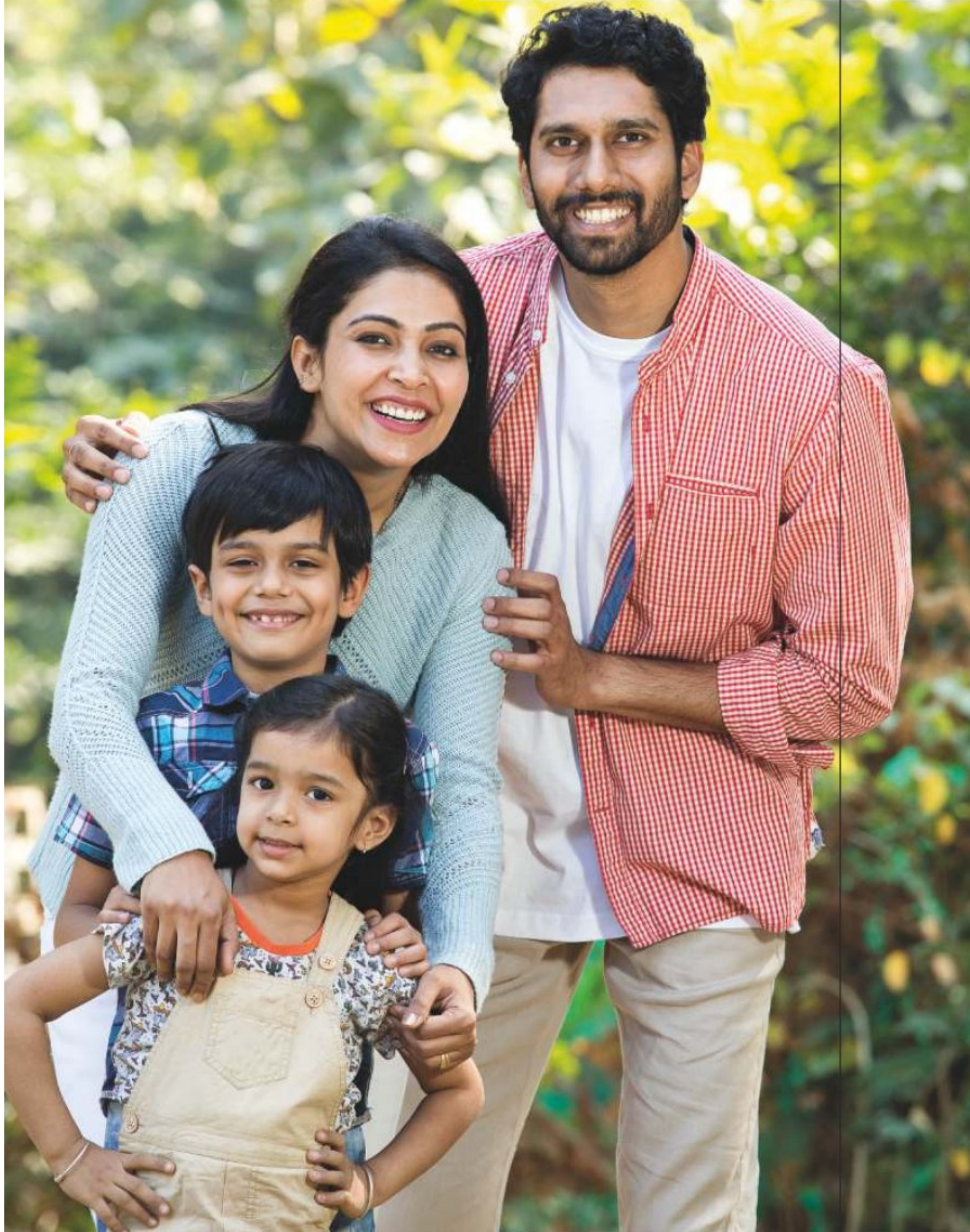


### Master Plan Designer

Mr. R J Nanjunda Swamy **M/S Tarun Infra Consultants**

"Every humanbeing has an intrinsic spirit that is intuitively drawn towards value and beauty. He finds connection to this spirit by bringing his passion for architecture into a collaboration with all the clients whom He work with in order to co-create projects that enrich life through plans."

# Planting Smiles on Thousands of Faces



## Completed Projects

- Singapore Gardens -Gubbalala Gate
- Paramount Gardens -Talaghattapura
- Pearl Gardens -Vajra Halli
- Navarathan Gardens -Gubbalala Gate
- Honey Gardens -Mallasandra
- Channamma Gardens -Raghuvanahalli
- Sri Deepika Gardens -Gubbalala Gate
- Sri Sai Gardens -Sarjapur
- Green Gardens -O B Chudahalli

## Ongoing Projects

- Gokul Gardens -Kaggalipura
- Sri Krishna Gardens -Gulakamale
- Sri Lakshmi Gardens -Kaggalipura
- Shruthi Gardens -Taralu
- The Gardens 1 -Kaggalipura
- The Gardens 2 -Taralu
- The Gardens 3 -Gulakamale
- Uttari Gardens -Uttari road
- Sri Kirshna Villa Plots -Kaggalipura
- Sri Radhakrishna Gardens -Devanahalli

# The Gardens



Close to Conveniences. Closer to Heart.

Gulakamale, Off Kanakapura Road.



## Corporate Office

No.1, Sri Krishna Mansion,  
Churchgatta Main Rd,  
New Bank Colony, Konanakunte,  
Bengaluru, Karnataka 560062.



+91 84317 55333



[marketing@slvhousing.co.in](mailto:marketing@slvhousing.co.in)



[www.slvhousing.co.in](http://www.slvhousing.co.in)

**BMRDA No** KPA/LAO/128/2020-21/1125 **RERA No** PRM/KA/RERA/1251/310/PR/181022/005330